

Essential Endoscopic Evaluation of Antireflux Barrier (ARB)

Speak the unified AFS language

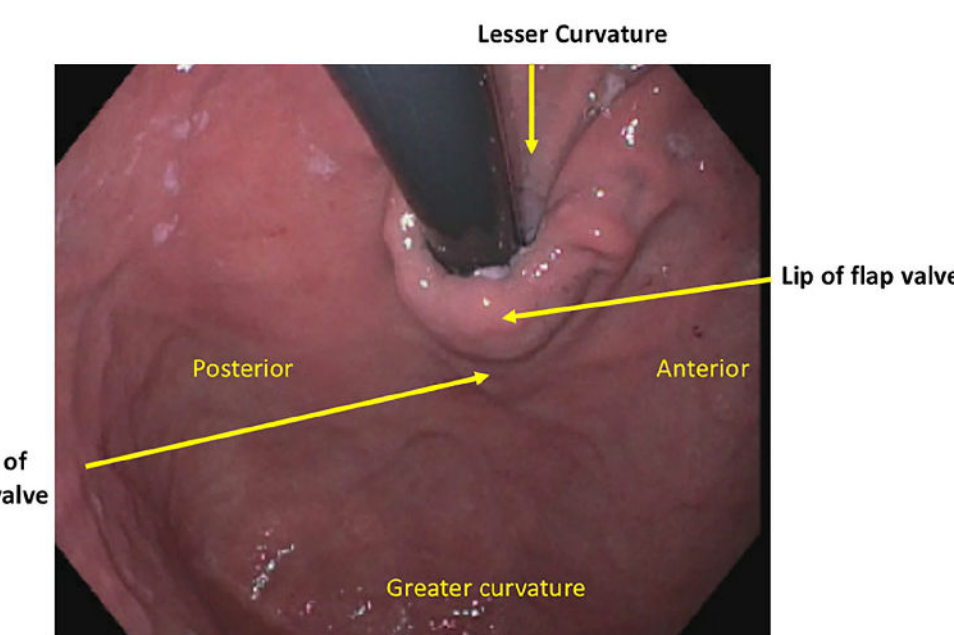
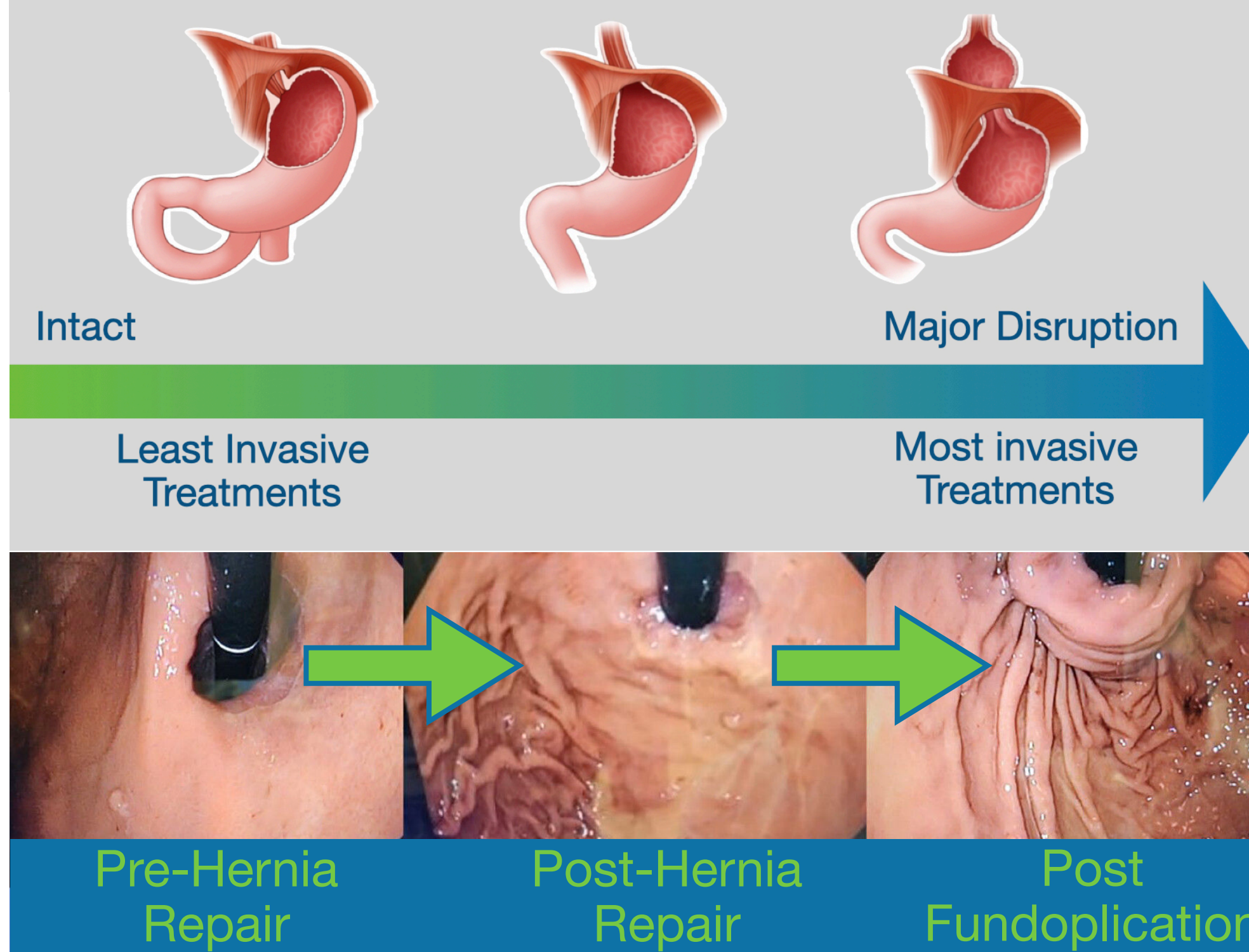
Native ARB

AFS Hiatus Grade	Grade 1 Intact	Grade 2 Partial disruption	Grade 3 Moderate disruption	Grade 4 Complete disruption
AFS Hiatus Grade	1	2	3	4
Hiatal axial Length, cm (L)	None (0 cm)	None (0 cm)	0-2 cm	>2 cm
Hiatal aperture, cm (D)	Snug to scope 1 cm	Loose 1-2 cm	Open 2-3 cm	Wide open >3 cm
Flap valve (F)	Present, full lip with Omega shape (F+)	Absent, thinning & flattening valve lip (F-)	Absent (F-)	Absent (F-)
LDF components	L0, D1, F+	L0, D1-2, F-	L0-2, D2-3, F-	L>2, D>3, F-

Nguyen NT, Thosani NC, Canto MI, et al. The American Foregut Society White Paper on the Endoscopic Classification of Esophagogastric Junction Integrity. *Foregut*. 2022;2(4):339-348.



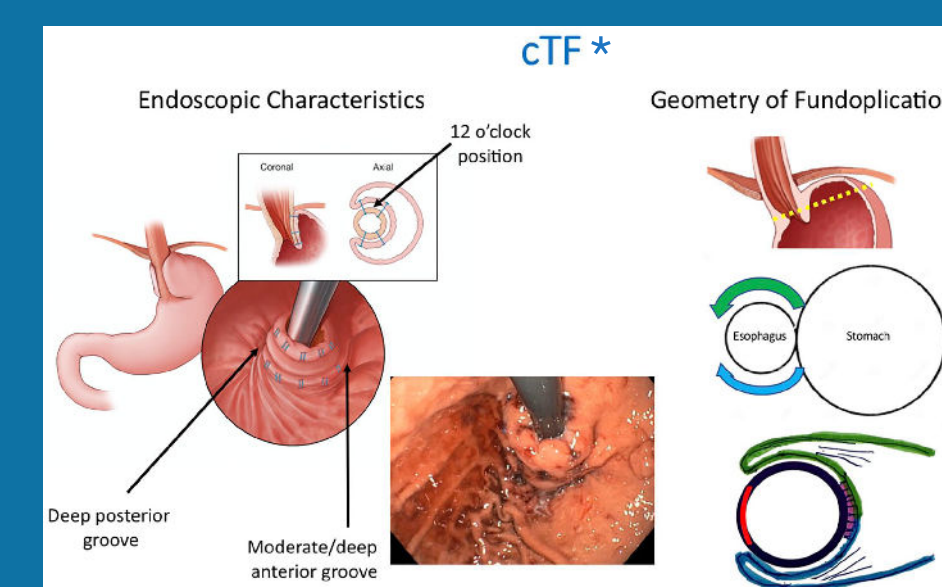
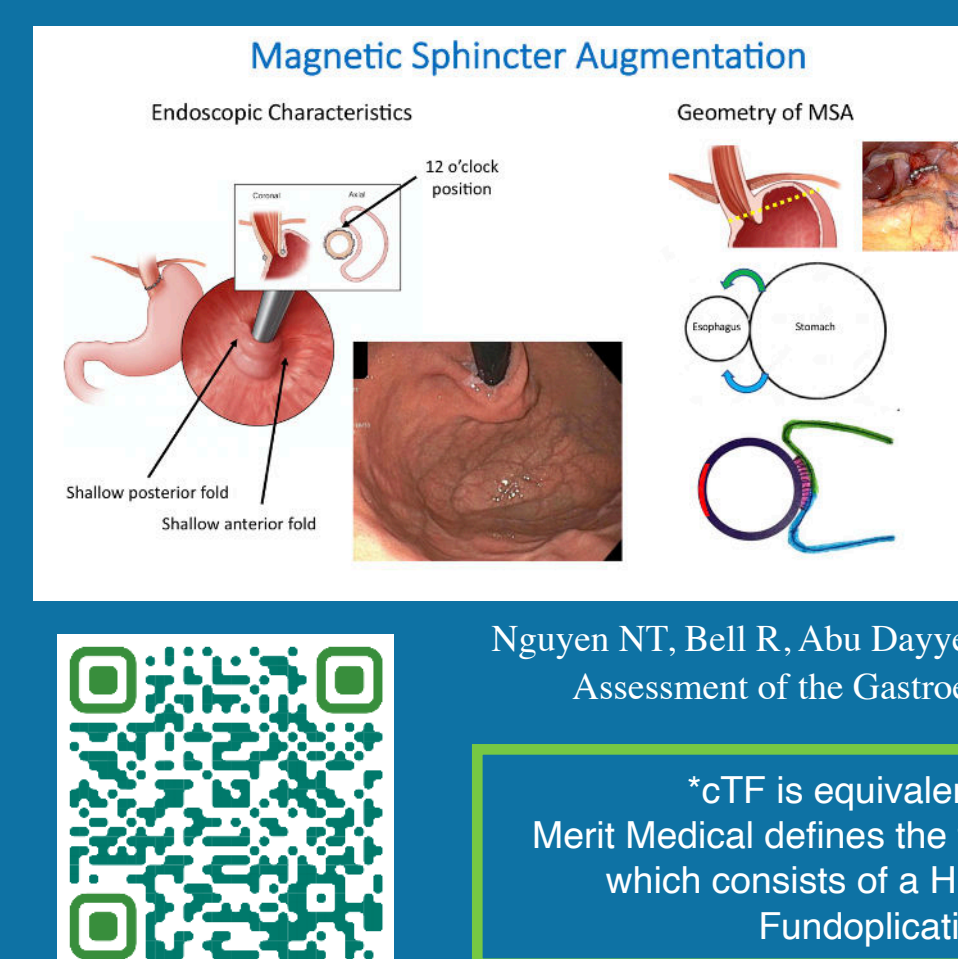
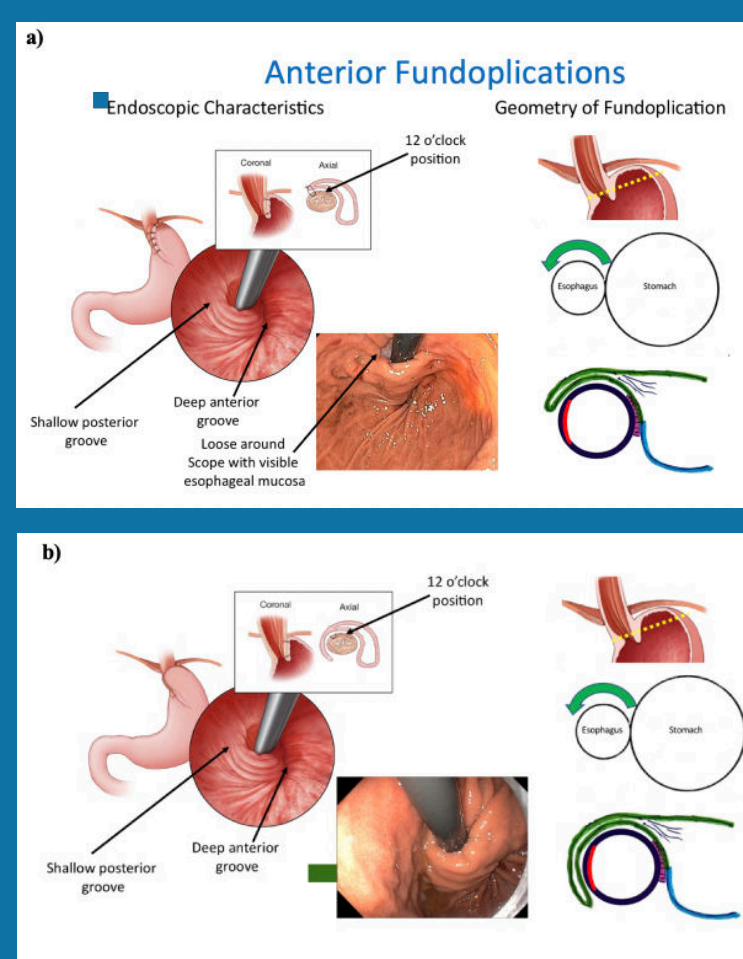
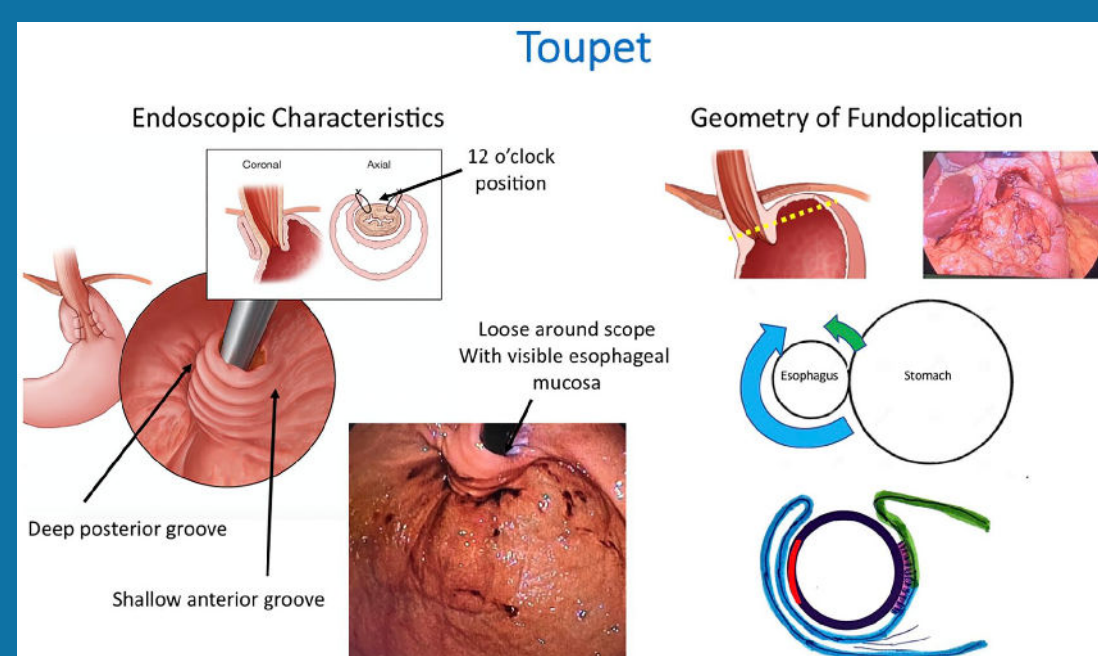
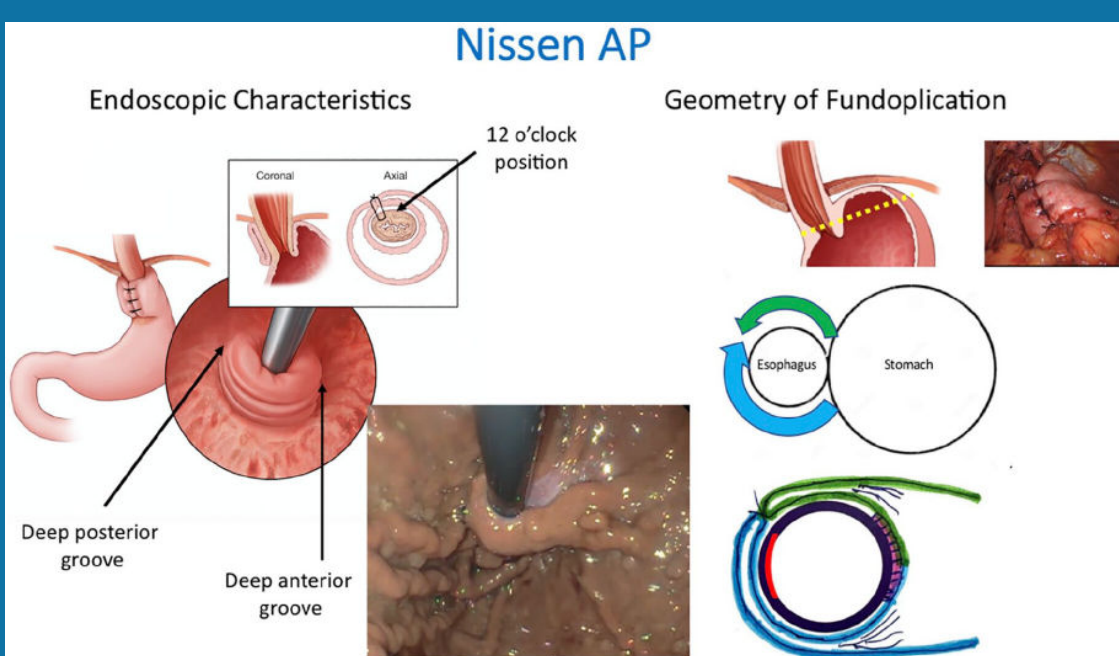
Where is your patient on the GERD Continuum?



After Surgery



Fundoplication Variations



Nguyen NT, Bell R, Abu Dayyeh B, et al. American Foregut Society White Paper on the Endoscopic Assessment of the Gastroesophageal Valve after Anti-Reflux Surgery. *Foregut*. 2024;0(0).

*cTIF is equivalent to what Merit Medical defines as cTIF. (Registered TM)
Merit Medical defines the term "cTIF" as a consecutive Transoral Incisionless Fundoplication which consists of a Hiatal Hernia Repair (HHR) followed by a Transoral Incisionless Fundoplication (TIF) procedure under a single anesthesia setting



Join the AFS Annual Fall Meeting

<https://www.americanforegutociety.org/>

