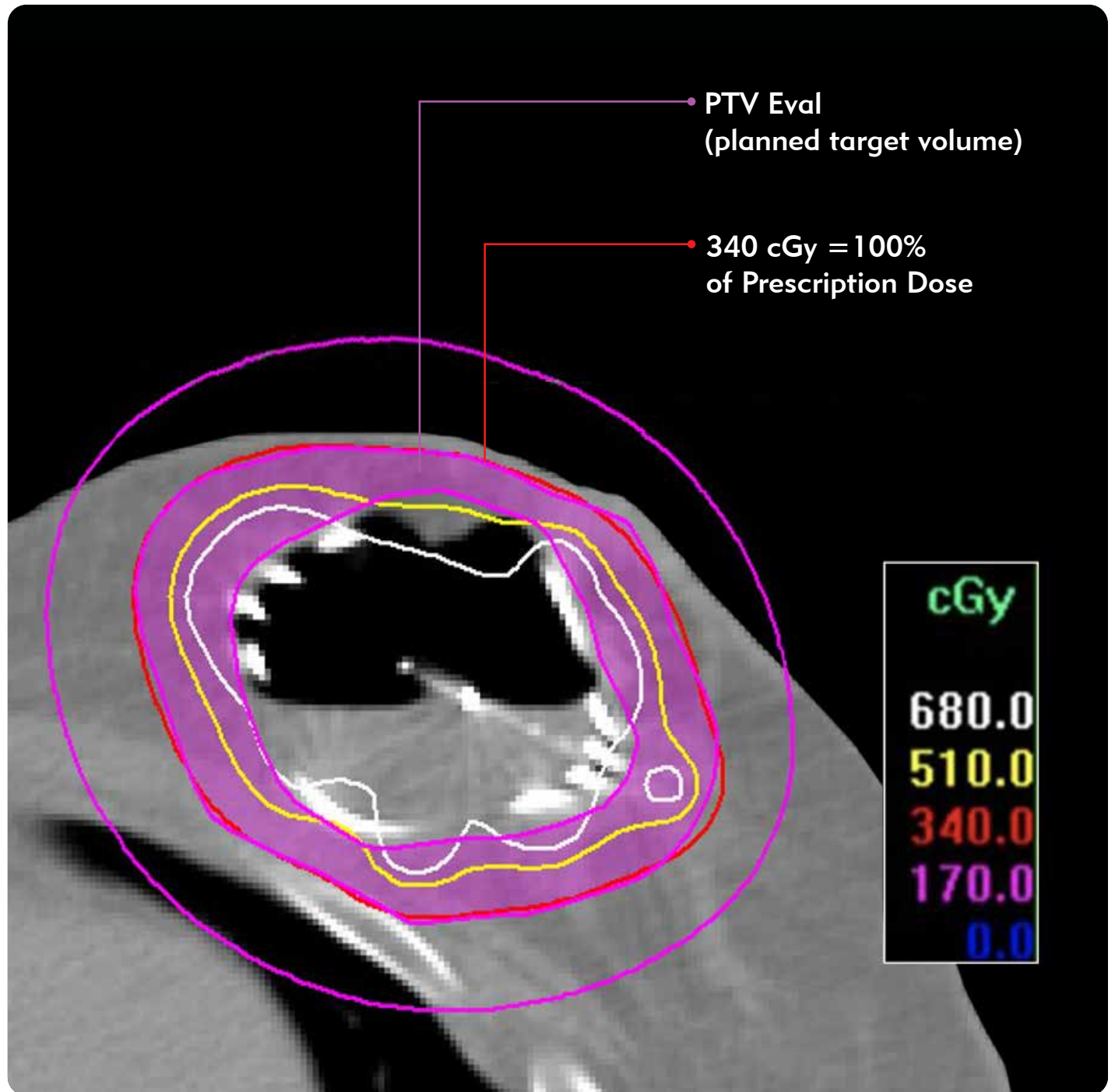


Unparalleled Dose Optimization with SAVI[®]



SAVI Brachy delivers precise dosimetry, minimizing exposure to skin and chest wall.



Planning & Dosimetry Criteria



Conventional SAVI Treatment

10 Fractions, 340 cGy

- $V90 \geq 90\%$ (required)
- $V95 \geq 95\%$ (aim)
- $V150 < 50$ cc
- $V200 < 20$ cc
- Skin $< 120\%$ of Rx (required)
Skin $< 100\%$ of (aim)

TRIUMPH-T¹ SAVI Treatment

3 Fractions, 750 cGy

- $V90 \geq 90\%$ (required)
- $V95 \geq 95\%$ (aim)
- **$V150 < 40$ cc (required)**
- **$V200 < 17$ cc (required)**
 $V200 < 15$ cc (aim)
- Skin $< 120\%$ of Rx (required)
Skin $< 100\%$ of Rx (aim)
- **Rib $< 120\%$ of Rx (required)**



¹ Khan, Atif J. et al. Three-Fraction Accelerated Partial Breast Irradiation (Apbi) Delivered With Brachytherapy Applicators Is Feasible And Safe: First Results From The Triumph-T Trial. International Journal of Radiation Oncology. 2019. Online publication.

Before using, refer to Instructions for Use for indications, contraindications, warnings, precautions, and directions for use.



Understand. Innovate. Deliver.™

merit.com
ciannamedical.com

Merit Medical Systems, Inc.
1600 West Merit Parkway
South Jordan, Utah 84095
Main: +1.801.253.1600
Customer Service: +1.801.208.4300

Merit Medical Europe, Middle
East, & Africa (EMEA)
Amerikalaan 42, 6199 AE
Maastricht-Airport
The Netherlands
+31 43 358 82 22

Merit Medical Ireland Ltd.
Parkmore Business Park West
Galway, Ireland
+353 (0) 91 703 733