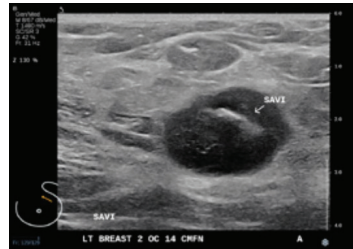
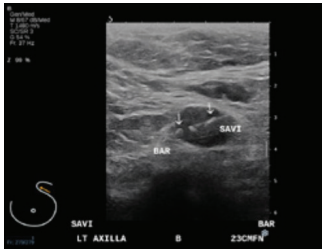


# SCOUT<sup>®</sup> REPORT



News and Views on Surgical Guidance  
and Breast Tumor Localization

## CLINICAL CASE REVIEW: Long term SCOUT<sup>®</sup> Placement in Breast and Axillary Node Prior to Neoadjuvant Chemotherapy



**Patient:** 64-year-old female /

**Diagnosis:** Locally advanced Invasive Ductal Carcinoma, Left UOQ with Left Axillary Metastasis

**Rx:** SCOUT localization of the left breast and left axillary lymph node was performed prior to neoadjuvant chemotherapy.

**Challenge:** Surgery delayed for 516 days post SCOUT localization.

**Conclusion:** SCOUT localization in the breast and axillary lymph node lesions can be performed prior to neoadjuvant chemotherapy when the lesion(s) are well visualized. FDA-cleared long-term placement in the breast and axillary lymph node soft tissues allowed for 516-day interval between time of SCOUT localization and definitive breast surgery in order to accommodate the patient's concomitant health care needs.



### Upcoming Events and Tradeshows

Join Merit Medical and learn more about SCOUT Radar Localization at the following events:



Radiological Society of  
North America

**BOOTH #3352**

Chicago, December 1-6, 2019

[Register Now for RSNA 2019](#)

THINK **WIRE-FREE**<sup>™</sup>

Don't miss THINK WIRE-FREE  
at RSNA in Chicago!

[Register for Think Wire-Free](#)



San Antonio  
Breast Cancer Symposium  
December 10-14, 2019

[Register Now for SABCS 2019](#)



Merit Medical Systems, Inc.  
1600 West Merit Parkway  
South Jordan, Utah 84095  
Main: +1.801.253.1600  
Customer Service: +1.801.208.4300

Merit Medical Europe, Middle  
East, & Africa (EMEA)  
Amerikalaan 42, 6199 AE  
Maastricht-Airport  
The Netherlands  
+31 43 358 82 22

Merit Medical Ireland Ltd.  
Parkmore Business Park West  
Galway, Ireland  
+353 (0) 91 703 733

merit.com  
ciannamedical.com

©2019 Merit Medical Systems, Inc. All rights reserved