



## DIAGNOSTIC GUIDE WIRES

## F

---

InQwire® PTFE-Coated Fixed & Moveable Core (with & without Heparin Coating)	F.1, 2
Merit Hydrophilic Guide Wires	F.3
InQwire Marker Wires	F.3
InQwire PTFE-Coated Fixed Core with RingMASTER™	F.3
Guide Wire Accessories	F.4
Torque Devices	F.5
H2O Torq™	F.5
SeaDragon™	F.5



catalog number	new configuration catalog number	description	size	length cm	core	heparin # coated	heparin # per box
<b>PTFE-COATED, INQWIRE GUIDE WIRES</b>							
STRAIGHT TIP WIRES							
<b>6676-A1</b>		Straight	.018" (0.46mm)	150	F		10
<b>6676-B3</b>		Straight	.018" (0.46mm)	180	F		5
<b>6676-C1</b>		Straight	.021" (0.53mm)	150	F		10
<b>6676-D3</b>		Straight	.021" (0.53mm)	180	F		5
	<b>IQ35F150S</b>	Straight	.035" (0.89mm)	150	F		10
	<b>IQH35F150S</b>	Straight	.035" (0.89mm)	150	F	H	10
	<b>IQ35F260S</b>	Straight	.035" (0.89mm)	260	F		10
<b>6690-41</b>		Straight	.035" (0.89mm)	150	M		10
<b>6690-71</b>		Straight	.035" (0.89mm)	150	M	H	10
<b>6690-61</b>		Straight	.038" (0.97mm)	150	M		10
	<b>IQ38F150S</b>	Straight	.038" (0.97mm)	150	F		10
	<b>IQ38F260S</b>	Straight	.038" (0.97mm)	260	F		10
6646-11		Straight 7cm TC	.035" (0.89mm)	145	M		10
	<b>IQ35F150NLT</b>	Newton; LT (13.5cm)	.035" (0.89mm)	150	F		10
	<b>IQH35F150NLT</b>	Newton; LT (13.5cm)	.035" (0.89mm)	150	F	H	10
	<b>IQ35F150NLLT</b>	Newton; LLT (18.5cm)	.035" (0.89mm)	150	F		10
	<b>IQH35F150NLLT</b>	Newton; LLT (18.5cm)	.035" (0.89mm)	150	F	H	10
	<b>IQ35F150NLLLT</b>	Newton; LLLT(23.5cm)	.035" (0.89mm)	150	F		10
<b>6677-B1</b>		Newton; LLT (18.5cm) 3mm J	.035" (0.89mm)	150	F		10
	<b>IQ35F80B</b>	Bentson (23cm)	.035" (0.89mm)	80	F		10
	<b>IQ35F150B</b>	Bentson (23cm)	.035" (0.89mm)	150	F		10
<b>8819-D1</b>	<b>IQH35F150B</b>	Bentson (23cm)	.035" (0.89mm)	150	F	H	10
	<b>IQ35F180B</b>	Bentson (23cm)	.035" (0.89mm)	180	F		10
	<b>IQH35F180B</b>	Bentson (23cm)	.035" (0.89mm)	180	F	H	5
	<b>IQ35F260B</b>	Bentson (23cm)	.035" (0.89mm)	260	F		10
	<b>IQ38F150B</b>	Bentson (23cm)	.038" (0.97mm)	150	F		10
	<b>IQH38F150B</b>	Bentson (23cm)	.038" (0.97mm)	150	F	H	10
	<b>IQ35F150BC</b>	Bentson (1.5cm)	.035" (0.89mm)	150	F		10
	<b>IQ35F150BST</b>	Bentson ST (10cm)	.035" (0.89mm)	150	F		10
	<b>IQ35F180BST</b>	Bentson ST (10cm)	.035" (0.89mm)	180	F		10
	<b>IQ38F150BST</b>	Bentson ST (10cm)	.038" (0.97mm)	150	F		10
<b>6680-61</b>		Super Stiff	.035" (0.89mm)	80	F		10
<b>6680-51</b>		Super Stiff	.035" (0.89mm)	100	F		10
<b>6680-11</b>		Super Stiff	.035" (0.89mm)	150	F		10
<b>6680-71</b>		Super Stiff	.035" (0.89mm)	180	F		10
<b>6680-23</b>		Super Stiff	.035" (0.89mm)	260	F		5
6680-31		Super Stiff	.038" (0.97mm)	150	F		10
6680-43		Super Stiff	.038" (0.97mm)	180	F		5
.....							
ROSEN-TIP WIRES							
	<b>IQ35F80J1O5RS</b>	1.5mm J (R)	.035" (0.89mm)	80	F		10
<b>6500-11</b>	<b>IQ35F150J1O5RS</b>	1.5mm J (R)	.035" (0.89mm)	150	F		10
<b>6609-13</b>	<b>IQ35F180J1O5RS*</b>	1.5mm J (R)	.035" (0.89mm)	180	F		5/10*
<b>6609-33</b>		1.5mm J (R)	.035" (0.89mm)	260	F		5
	<b>IQ38F150J1O5RS</b>	1.5mm J (R)	.038" (0.97mm)	150	F		10
J-TIP WIRES							
	<b>IQ35F150J1O5</b>	1.5mm J	.035" (0.89mm)	150	F		10
	<b>IQH35F150J1O5</b>	1.5mm J	.035" (0.89mm)	150	F	H	10
<b>6693-A1</b>		1.5mm J	.035" (0.89mm)	150	M		10

All "J" tip fixed core wires are finger-straightenable. FB = Firm Body ST = Short Taper  
H= Heparin Coating (R) = Rosen F=Fixed Core M= Moveable Core TC = Tapered Core  
\* New guide wire configurations packaged 10 per box. Original guide wires packaged 5 per box.

**NOTE:** Guide Wire catalog numbers in **BOLD TYPE** are available for immediate delivery. Please allow up to eight weeks delivery for others (minimum quantities required).

catalog number	new configuration catalog number	description	size	length cm	heparin core coated	# per box
<b>PTFE-COATED, INQWIRE GUIDE WIRES (CONTINUED)</b>						
J-TIP (CONTINUED)*						
<b>6682-H1</b>		3mm J	.014" (0.36mm)	150	F	10
<b>6682-J3</b>		3mm J	.014" (0.36mm)	180	F	5
<b>6682-K1</b>		3mm J	.018" (0.46mm)	150	F	10
<b>6682-L3</b>		3mm J	.018" (0.46mm)	180	F	5
<b>6682-M1</b>		3mm J	.021" (0.53mm)	150	F	10
<b>6682-N3</b>		3mm J	.021" (0.53mm)	180	F	5
<b>6682-E1</b>		3mm J	.025" (0.64mm)	150	F	10
	<b>IQ35F80J3</b>	3mm J	.035" (0.89mm)	80	F	10
<b>6682-41</b>	<b>IQ35F150J3</b>	3mm J	.035" (0.89mm)	150	F	10
<b>6682-C1</b>	<b>IQH35F150J3</b>	3mm J	.035" (0.89mm)	150	F H	10
<b>6682-P1</b>	<b>IQ35F180J3*</b>	3mm J	.035" (0.89mm)	180	F	5 /10*
	<b>IQ35F260J3</b>	3mm J	.035" (0.89mm)	260	F	10
<b>6693-41</b>		3mm J	.035" (0.89mm)	150	M	10
<b>6693-71</b>		3mm J	.035" (0.89mm)	150	M H	10
<b>6684-41</b>		3mm J TC	.035" (0.89mm)	150	M	10
<b>6647-11</b>		3mm J 7cm TC	.035" (0.89mm)	145	M	10
	<b>IQ38F150J3</b>	3mm J	.038" (0.97mm)	150	F	10
<b>6682-D1</b>	<b>IQH38F150J3</b>	3mm J	.038" (0.97mm)	150	F H	10
	<b>IQ38F260J3</b>	3mm J	.038" (0.97mm)	260	F	10
<b>6693-61</b>		3mm J	.038" (0.97mm)	150	M	10
<b>6693-81</b>		3mm J	.038" (0.97mm)	150	M H	10
6684-61		3mm J TC	.038" (0.97mm)	150	M	10
	<b>IQ35F150J3F</b>	3mm J FB	.035" (0.89mm)	150	F	10
	<b>IQH35F150J3F</b>	3mm J FB	.035" (0.89mm)	150	F H	10
	<b>IQ35F180J3F</b>	3mm J FB	.035" (0.89mm)	180	F	10
	<b>IQH35F180J3F</b>	3mm J FB	.035" (0.89mm)	180	F H	5
	<b>IQ38F150J3F</b>	3mm J FB	.038" (0.97mm)	150	F	10
	<b>IQH38F150J3F</b>	3mm J FB	.038" (0.97mm)	150	F H	10
	<b>IQ38F180J3F</b>	3mm J FB	.038" (0.97mm)	180	F	10
	<b>IQ35F150J6</b>	6mm J	.035" (0.89mm)	150	F	10
	<b>IQH35F70J6</b>	6mm J	.035" (0.89mm)	70	F H	10
<b>6694-21</b>		6mm J	.035" (0.89mm)	150	M	10
	<b>IQ38F150J6</b>	6mm J	.038" (0.97mm)	150	F	10
	<b>IQH38F70J6</b>	6mm J	.038" (0.97mm)	70	F H	10
	<b>IQ35F150J15</b>	15mm J	.035" (0.89mm)	150	F	10
	<b>IQH35F150J15</b>	15mm J	.035" (0.89mm)	150	F H	10
	<b>IQ38F150J15</b>	15mm J	.038" (0.97mm)	150	F	10
<b>8820-B1</b>		15mm J	.035" (0.89mm)	150	M	10
FIXED CORE, DOUBLE-ENDED						
	IQ35F150J105S	1.5mm J/Straight	.035" (0.89mm)	150	F	10
	IQ35F150J3S	3mm J/Straight	.035" (0.89mm)	150	F	10
	IQH35F150J3S	3mm J/Straight	.035" (0.89mm)	150	F H	10
	IQ35F150J3SHD	3mm J/Straight/Heavy Duty	.035" (0.89mm)	150	F H	10

All "J" tip fixed core wires are finger-straightenable. FB = Firm Body ST = Short Taper  
H= Heparin Coating (R) = Rosen F=Fixed Core M= Moveable Core TC = Tapered Core  
\* New guide wire configurations packaged 10 per box. Original guide wires packaged 5 per box.

**NOTE:** Guide Wire catalog numbers in **BOLD TYPE** are available for immediate delivery. Please allow up to eight weeks delivery for others (minimum quantities required).

catalog number	description	size	length cm	core	# per box
<b>MERIT LAUREATE HYDROPHILIC GUIDE WIRES</b>					
<b>LWSTDA35150</b>	Standard/Angled Tip	.035" (0.89mm)	150	F	5
<b>LWSTDA35180</b>	Standard/Angled Tip	.035" (0.89mm)	180	F	5
<b>LWSTDA35260EX</b>	Standard/Angled Tip	.035" (0.89mm)	260	F	5
<b>LWSTDS35150</b>	Standard/Straight Tip	.035" (0.89mm)	150	F	5
<b>LWSTFA3580</b>	Stiff/Angled Tip	.035" (0.89mm)	80	F	5
<b>LWSTFA35150</b>	Stiff//Angled Tip	.035" (0.89mm)	150	F	5

catalog number	description	size	cm	core	length box	# per
----------------	-------------	------	----	------	------------	-------

**HYDROPHILIC-COATED, MERIT H2O GUIDE WIRES**

HYDROPHILIC STANDARD WIRE

<b>H2OSTDA3580</b>	Standard/Angled Tip	.035" (0.89mm)	80	F	5
<b>H2OSTFA3580</b>	Stiff/Angled Tip	.035" (0.89mm)	80	F	5
<b>H2OSTDS35150</b>	Standard/Straight Tip	.035" (0.89mm)	150	F	5
<b>H2OSTDA35150</b>	Standard/Angled Tip	.035" (0.89mm)	150	F	5
<b>H2OSTDA38150</b>	Standard/Angled Tip	.038" (0.97mm)	150	F	5
<b>H2OSTFA35150</b>	Stiff/Angled Tip	.035" (0.89mm)	150	F	5

HYDROPHILIC SPECIALTY WIRE

<b>H2OSTDA35150LT</b>	Standard/Angled Tip/Long Taper	.035" (0.89mm)	150	F	5
<b>H2OSTDA35180</b>	Standard/Angled Tip	.035" (0.89mm)	180	F	5
<b>H2OSTFS35180</b>	Stiff/Straight Tip	.035" (0.89mm)	180	F	5
<b>H2OSTFA35180</b>	Stiff/Angled Tip	.035" (0.89mm)	180	F	5
<b>H2OSTDA35260EX</b>	Standard/Angled Tip/Exchange	.035" (0.89mm)	260	F	5
<b>H2OSTFS35260EX</b>	Stiff/Straight Tip/Exchange	.035" (0.89mm)	260	F	5
<b>H2OSTFA35260EX</b>	Stiff/Angled Tip/Exchange	.035" (0.89mm)	260	F	5

HYDROPHILIC SMALL DIAMETER SPECIALTY WIRE

<b>H2OSTDA25150</b>	Standard/Angled Tip	.025" (0.64mm)	150	F	5
<b>H2OSTDA25180</b>	Standard/Angled Tip	.025" (0.64mm)	180	F	5
<b>H2OSTDS25180</b>	Standard/Straight Tip	.025" (0.64mm)	180	F	5
<b>H2OSTDA25260EX</b>	Standard/Angled Tip/Exchange	.025" (0.64mm)	260	F	5
<b>H2OSTDA1880</b>	Standard/Angled Tip	.018" (0.46mm)	80	F	5
<b>H2OSTDA18150</b>	Standard/Angled Tip	.018" (0.46mm)	150	F	5
<b>H2OSTDA18180</b>	Standard/Angled Tip	.018" (0.46mm)	180	F	5
<b>H2OSTDA18260EX</b>	Standard/Angled Tip/Exchange	.018" (0.46mm)	260	F	5

Distribution agreement limits sales to selected countries (contact customer service).

**MARKER WIRE HYDROPHILIC COATED (LASER ETCHED MARKS AT 5CM AND 10CM)**

6676-H1	Straight Platinum Tip	.018" (0.46mm)	80cm	F	10
6676-G1	Straight Platinum Tip	.018" (0.46mm)	120cm	F	10

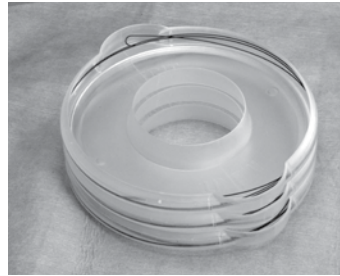
catalog number	description	size	length cm	core	# per box
<b>INQWIRE GUIDE WIRES WITH RINGMASTER</b>					
STRAIGHT TIP WIRES					
<b>IQR35F150B</b>	Bentson (23cm)	.035" (0.89mm)	150	F	10
<b>IQR35F150BST</b>	Bentson Short Taper (10cm)	.035" (0.89mm)	150	F	10
J - TIP WIRES					
<b>IQR35F150J3</b>	J 3.0mm	.035" (0.89mm)	150	F	10
<b>IQR35F260J3</b>	J 3.0mm	.035" (0.89mm)	260	F	10
<b>IQR35F150J3F</b>	J 3.0mm Firm	.035" (0.89mm)	150	F	10
<b>IQR38F150J3</b>	J 3.0mm	.038" (0.97mm)	150	F	10
<b>IQR38F150J3F</b>	J 3.0mm Firm	.038" (0.97mm)	150	F	10
FIXED CORE: DOUBLE ENDED					
<b>IQR35F150J3S</b>	J 3.0mm/Straight	.035" (0.89mm)	150	F	10



All "J" tip fixed core wires are finger-straightenable. FB = Firm Body ST = Short Taper H= Heparin Coating (R) = Rosen F=Fixed Core M= Moveable Core TC = Tapered Core  
 \* New guide wire configurations packaged 10 per box.  
 Original guide wires packaged 5 per box.

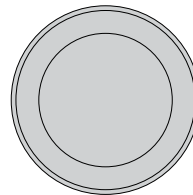
Heparin coating not available with InQwire Guide Wires packaged in RingMASTER.

**THE RINGMASTER GUIDE WIRE BASIN** is a multi functional product designed to organize, hydrate and facilitate identification of wires and catheters on the sterile field. Packaged individually, 10 units per box.



CATALOG NUMBER RM01 Guide Wire Basin

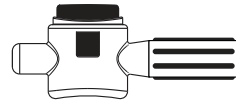
**GUIDE WIRE BOWL\* 2500 CC**



CATALOG NUMBER K12T-01788

SOLD INDIVIDUALLY

**SEADRAGON GUIDE WIRE TORQUE DEVICE** is an ergonomic torque device operable with one hand, designed to enhance manipulation of the guide wire tip. The single component plastic design can be used on Hydrophilic or PTFE coated wires and allows easy reposition and removal for rapid device exchanges. Packaged individually, 10 units per box.

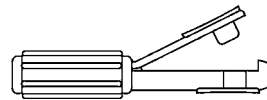


---

CATALOG NUMBER     **TD500**     Guide wires from .018" (0.46mm) to .038" (0.97mm)

---

**H2O TORQ GUIDE WIRE TORQUE DEVICE** is an ergonomic torque device operable with one hand, designed to enhance manipulation of the guide wire tip. The single component plastic design can be used on Hydrophilic or PTFE coated wires and allows easy reposition and removal for rapid device exchanges. Packaged individually, 10 units per box.



---

CATALOG NUMBER

**TD100**     Orange device: Guide wires from .025" (0.64mm) to .040" (1.02mm)

**TD200**     Yellow device: Guide wires from .010" (0.25mm) to .020" (0.51mm)